

**Miele**

Once a Miele,  
Always a Miele.



Dishwasher and Laundry Appliances  
Price List, Australia.

Effective 01.08.2024



Scan the QR code  
for more information

**20  
YEARS**

German engineered and  
tested to the equivalent of  
20 years' average usage.\*

Terms and Conditions apply. Visit [miele.com.au/quality](https://miele.com.au/quality)

\*\* During development phase of the displayed product series washing machine series W1, dryer series T1, washer-dryer series WT1 and product series dishwashers G 5000 and G 7000, Miele has tested the functionality of core components in durability tests to simulate 20 years' average use within an average household. Individual products are likely to require servicing from time to time and may require replacement of core components to maintain them in a serviceable condition. For more information visit: [Miele.com.au/quality](https://miele.com.au/quality) or scan the QR code.

**125**  
Years

## Quality Ahead of its Time

Your needs are the DNA of our appliances.

In order to create long-lasting reliability, we combine constant innovation with expert craftsmanship – the meticulous devotion to detail that makes sure, our machines are built to last and to answer your every need.

That's why our appliances are designed to work intuitively together, to make every task seamless and effortless. Whether it's laundry, dishwashing, refrigeration, kitchen appliances or floor care, everything we do is to improve your household experience.

## Longevity is The Ultimate Sustainability

### SUSTAINABILITY

Imagine, instead of using many appliances over the years – just using one. One that uses less water, less energy. So you consume less.

### CRAFTSMANSHIP

Since 1899, we've never been satisfied with the best. For us, every ground-breaking innovation is more than a cause for celebration. It is a challenge to create something even better. That's why we craft our own parts, forge our own iron. Even make the machines that make the machines. We call it: Immer besser.

### PERFORMANCE

Whilst some car engines are tested for 3,000 hours, we check our performance with up to 10,000.<sup>1</sup> Day and night. Comprehensive and precise. That's why you can completely rely on our products.



<sup>1</sup> We test up to 10,000 hours: During the development phase of washing machines series W1 Miele and dryer series T1 has tested models and core components for 10,000 hours.

# Miele

## Miele Washing Machines and Dryers are Tested to the Equivalent of 20 Years' Average Usage.\*\*

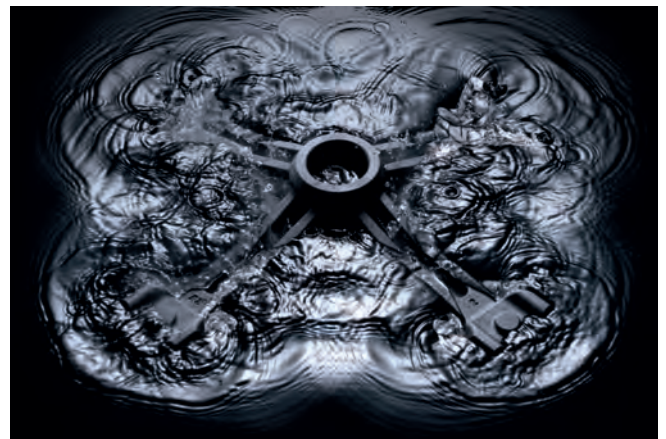
Miele washing machines are designed for long-lasting performance. So you can get the perfect clean for your favourite clothes, year after year.



A washing machine should be seen, not heard. That's why we test every appliance not only for a long service life and a hygienic, sustainable performance but also for very low noise levels.



30% of our development time goes into testing. To guarantee outstanding results, for years to come.



\*\* During development phase of the displayed product series washing machine series W1, dryer series T1 and washer-dryer series WT1, Miele has tested the functionality of core components in durability tests to simulate 20 years' average use within an average household. Individual products are likely to require servicing from time to time and may require replacement of core components to maintain them in a serviceable condition. For more information visit: [Miele.com.au/quality](https://miele.com.au/quality) or scan the QR code.

**20  
YEARS**

German engineered and tested to the equivalent of 20 years' average usage.  
Terms and Conditions apply. Visit [miele.com.au/quality](https://miele.com.au/quality)



Scan the QR code for more information

## Connected Home with Miele@home\*

### The product highlights of Miele@home

Cleverly networked: with our innovative Miele@home system, you can exploit the full potential of your Miele appliances and make your everyday life even smarter. All intelligent Miele domestic appliances can be networked conveniently and securely. Operation is simple – whether with the Miele app, via smart speakers or through integration into existing Smart Home solutions. The appliances are networked via a home WiFi router and the Miele Cloud.



### Miele app\*\*

Your perfect companion: with the Miele app, you can always keep track of your Miele domestic appliances. For example, would you like to keep an eye on the cooking process in the oven. The app provides you with all the necessary information and is fast and convenient to operate. Moreover, the app also offers additional information and services for your Miele appliances, e.g. the BaristaAssistant or recipes. Download the app now!



### Smart speakers\*\*\*

Network your smart Miele domestic appliances with digital voice assistant systems. With Amazon Alexa or Google Home, you can conveniently start programmes, adjust settings or call up status reports. Hands full? Simply open the oven door of ArtLine appliances using voice commands. More and more systems are also offering displays with visual output for extra convenience in day-to-day life.



### Smart Home Integration

A Smart Home makes daily routines easier and creates individual convenience for you in your home. Shutters, heating and domestic appliances communicate with each other and are increasingly operated using apps or smart speakers. Thanks to the practical Miele Cloud interface, you can integrate them quickly and easily into your Smart Home partner application. This allows you to enjoy the efficiency and convenience of holistic domestic appliance networking.

\* Additional digital offer from Miele & Cie. KG. All smart applications are made possible with the Miele@home system. The range of functions can vary depending on the model and the country. The system requirements for network-enabled Miele domestic appliances are available at [miele.com/systemrequirements](http://miele.com/systemrequirements).

\*\* Available for a mobile device. For the minimum requirements, please refer to the information provided in the app store.

\*\*\* Voice control uses the Google LLC and Amazon Alexa services and is based on their availability. The range of functions can vary depending on the country. Google, Google Home and Google Nest Mini are trademarks of Google LLC. Google Nest Mini requires WiFi, an Internet connection, a nearby power socket, a Google account and a compatible mobile device. Minimum requirements for the operating system can be found at: [g.co/home/req](http://g.co/home/req). Compatible with Alexa. Amazon, Alexa and all associated trademarks are trademarks of Amazon.com, Inc. or their affiliated companies.

# Miele

## Connected Home with Miele@home\*



### Appliance Status

Always up to date: the dashboard shows the status of all networked Miele appliances.

### MobileControl

With MobileControl, you can use the app to operate your appliances – wherever you are.

### RemoteUpdate

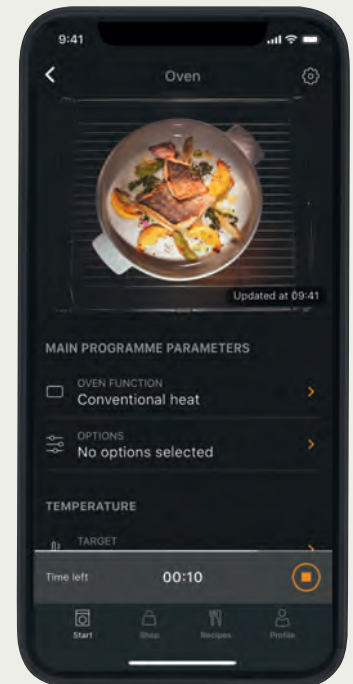
Keep the software on your appliance up to date – without having to call a service technician. Receive selected function upgrades or new features.\*

### Push Notifications

Get relevant information when it is needed, including the status of any consumables.

### Consumption Dashboard

Supporting you in using your appliances in the most sustainable way. Consumption trends, program usage, and valuable Eco Tips.



Discover all the options provided by the Miele app! [www.miele.de/mieleathome](http://www.miele.de/mieleathome)



Download the Miele app now!

\* Additional digital offer from Miele & Cie. KG. All smart applications are made possible with the Miele@home system. The range of functions can vary depending on the model and the country. The system requirements for network-enabled Miele domestic appliances are available at [miele.com/systemrequirements](http://miele.com/systemrequirements).

Google Play and the Google Play logo are trademarks of Google LLC.

## Better Results with Miele Washing Machines

Easy to load and operate, Miele front-loading washing machines can be positioned in almost any space and with features such as TwinDos – the most efficient liquid detergent dispensing system on the market - you'll experience worry-free washing for many years to come.

### All Washing Machines - Standard DNA



#### Miele Quality

Miele washing machines are tested to the equivalent of 20 years' average usage.<sup>1</sup>



#### Honeycomb Drum

Gentle laundry care - Never hand wash again.



#### Miele Made Electronics

Quality, serviceability and peace of mind.



#### 4 Suspension Springs and 3 Shock Absorbers

For balance and minimised operational noise.



#### ProfiEco Motor

Long-lasting, powerful, efficient, maintenance-free and quiet for your convenience.



#### Stainless Steel Drum Flange

For ultimate durability and hygiene.

### Washing Machine Highlights\*



#### TwinDos

Independently tested as the best liquid detergent on the market.<sup>2</sup>



#### QuickPowerWash

Outstanding wash results in 49 minutes, up to 4 kgs.



#### SingleWash

Wash single garments and loads up to 1 kg quickly and efficiently.



#### Pre-ironing

Reduce your ironing by up to 50%.



#### Dedicated Delicate Programmes

Even the most delicate items are treated with care, eliminating the need for hand washing.



#### Miele@home

Operate your appliance remotely and access assistant functions via the Miele App.

<sup>2</sup>Tested by the Hohenstein Institute. Test no. HL 13.2.10991. \*Features may vary between models.

<sup>1</sup>During development phase of the displayed washing machine series W1, Miele tested the functionality of core components under controlled laboratory settings with 5,000 wash cycles using varying wash programs which simulate 20 years' average use within an average household. Individual products are likely to require servicing from time to time and may require replacement of core components to maintain them in a serviceable condition. For more information visit: [Miele.com.au/quality](http://Miele.com.au/quality) or scan the QR code.



Scan the QR code for more information

## Total Care with Miele Tumble Dryers

Miele offers a variety of drying systems for you to choose from. All are designed to deliver perfect drying results with the greatest of care while making life at home a great deal easier.

### All Tumble Dryers - Standard DNA



#### Miele Quality

Miele tumble dryers are tested to the equivalent of 20 years' average usage.<sup>1</sup>



#### PerfectDry

Precise drying thanks to mineral sensors.



#### EcoDry

Low energy consumption and short drying times through the entire life of the dryer.



#### Heat Pump Technology

Low temperature, energy efficient and gentle drying.



#### Honeycomb Drum

For gentle garment care.



#### Miele Made Electronics

Quality, serviceability and peace of mind.

### Tumble Dryer Highlights\*



#### 10 Star Energy Rating

Experience exceptional results with our range of 10 star heat pump dryers.



#### Pre-ironing

Reduce your ironing by up to 50%.



#### FragranceDos<sup>2</sup>

Fragrant laundry with a choice of two scents at any given time.



#### Door hinge on either side

Choose which way you want your door to open.



#### LED Drum Lighting

Perfect illumination of the Honeycomb drum.



#### Miele@home

Operate your appliance remotely and access assistant functions via the Miele App.

\*Features may vary between models. <sup>2</sup>Compared to a Miele tumble dryer without EcoSpeed with the same load size and energy efficiency rating. Tested in Cottons programme with full load.

<sup>1</sup>During development phase of the displayed dryer series T1, Miele tested the functionality of core components under controlled laboratory settings with 5,000 drying cycles using varying programs which simulate 20 years' average use within an average household. Individual products are likely to require servicing from time to time and may require replacement of core components to maintain them in a serviceable condition. For more information visit: [Miele.com.au/quality](http://Miele.com.au/quality) or scan the QR code.



Scan the QR code for more information

## TwinDos®\* Automatic Detergent Dispensing – The Innovation for Perfect Results



Achieve perfect results every time: thanks to the innovative TwinDos®\* dispensing system, the integrated UltraPhase 1 and 2 detergent is dispensed automatically allowing you to save up to 30% on detergent compared to manual dispensing.

UltraPhase 1 guarantees perfect cleanliness and brilliant results on colours and white laundry. With UltraPhase 2, bleaching agent is added at the ideal moment to ensure that even stubborn stains are removed completely.



The German Hohenstein test institute tested the characteristics of the automatic 2-phase dispensing system in connection with Miele's UltraPhase 1 and UltraPhase 2 detergents. They confirmed excellent wash results in terms of stain removal, the degree of whiteness, the anti-greying effect and accuracy of dispensing.



Miele's 2-phase system produces a cleaner and more thorough washing result than conventional liquid detergents that do not contain bleaching agents, as these would destroy the other ingredients. UltraPhase 1 and 2 are stored and dispensed separately, which makes it possible to add bleaching agent to the TwinDos® system.

Active ingredients in UltraPhase 1 dissolve the dirt and remove stains such as oil, grease, protein and starch. With UltraPhase 2, bleaching agent is added at the appropriate time during the wash process and removes even stubborn stains such as coffee, tea, fruit juice or red wine. Experience Miele's chemistry laboratory & the cleaning performance of UltraPhase 1 and UltraPhase 2 at [miele.com.au](http://miele.com.au) (Products – Miele Cleaning Products).

To protect delicate skin, we now offer a Sensitive UltraPhase 1 and 2 detergent version: it is completely free of colorants and fragrances. By using sensitive detergents, you give your skin time to recuperate and keep allergies at bay. And your laundry? Perfectly cleaned and cared for – you can rely on that too.

### Working in Perfect Harmony for More Sustainability








Economical washing in any situation: the perfect interaction between the TwinDos® automatic dispensing system and the excellent cleaning performance of PowerWash ensures maximum efficiency when washing. Individual items of laundry can also be washed economically – thanks to the practical SingleWash extra. This enables savings of up to 40% for detergent\*\* and up to 60% in terms of energy and time^ with every use.



\*Patent: EP 2 784 205 \*\*Compared with automatic dispensing without SingleWash ^In the "Minimum iron 40 °C" programme compared with Miele washing machines without PowerWash and SingleWash



## Washing Machine Specifications

	<b>WCA 020</b>	<b>WWD 120</b>	<b>WWD 164</b>	<b>WWD 320</b>	<b>WWD 660</b>
					
<b>Price</b>	<b>\$1,549</b>	<b>\$2,049</b>	<b>\$2,299</b>	<b>\$2,299</b>	<b>\$2,299</b>
<b>Item Number</b>	11636040	11407230	12144850	11407240	11621240
<b>Load Capacity</b>	7 kg	8 kg	9 kg	8 kg	8 kg
<b>Door Design</b>	White / Black	White / Black	White / Black	White / Black	White / Black
<b>Display</b>	EasyControl Yellow / 7-segment	7 segment DirectSensor Yellow	7 segment DirectSensor Yellow	7 segment DirectSensor Yellow	7 segment DirectSensor Yellow
<b>Fascia</b>	Straight	5° angle	5° angle	5° angle	5° angle
<b>Installation: Built-under</b>	YES	-	-	-	-
<b>Built-under Kit</b>	UBS W1 / G	-	-	-	-
<b>Miele Washer DNA</b>	YES	YES	YES	YES	YES
<b>Water Connection</b>	Cold Connection	Cold Connection	Cold Connection	Cold Connection	Cold Connection
<b>Water Protection System</b>	WCS <sup>4</sup>	WCS <sup>4</sup>	WCS <sup>4</sup>	WCS <sup>4</sup>	WCS <sup>4</sup>
<b>Wash Programmes</b>	12	12	12	12	12
<b>Spin Speed</b>	1400rpm	1400rpm	1400rpm	1400rpm	1400rpm
<b>Cap Dosing</b>	YES	YES	YES	YES	YES
<b>TwinDos Automatic Detergent Dispensing</b>	-	-	-	-	YES
<b>QuickPowerWash Programme (4 kg)</b>	-	-	-	YES	-
<b>SingleWash</b>	-	-	-	-	-
<b>Stains</b>	-	-	-	-	-
<b>Soak Option</b>	-	-	-	-	-
<b>Extra Quiet Option</b>	-	-	-	-	-
<b>Honeycomb Drum</b>	YES	YES	YES	YES	YES
<b>SteamCare</b>	-	-	-	-	-
<b>AddLoad</b>	YES	YES	YES	YES	YES
<b>Pre-ironing</b>	-	YES	YES	YES	YES
<b>24 h Delay Start</b>	YES	YES	YES	YES	YES
<b>LED Drum Lighting</b>	-	-	-	-	-
<b>Choice of Language (MultiLingua)</b>	-	-	-	-	-
<b>Energy / WELS Star Rating Test Programme</b>	4.0 / 4.0 Eco 40-60	4.5 / 4.5 Cottons <40°C	4.5 / 4.5 Eco 40-60	4.5 / 4.5 Cottons <40°C	4.5 / 4.5 Eco 40-60
<b>WELS Registration Number</b>	C01942	C01784	C02179	C01823	C01917
<b>Water l / Wash</b>	68	63	76	67	63
<b>ECOFeedback</b>	-	-	-	-	-
<b>Miele@home</b>	-	-	YES	-	YES
<b>Complimentary UltraPhase 1 and 2</b>	-	-	-	-	YES
<b>CapDos Sample</b>	-	-	-	-	-
<b>Voucher for 6 Month Supply of UltraPhase</b>	-	-	-	-	YES

## Matching Tumble Dryers



## Washing Machine Specifications

	WWH 860	WWG 360	WWG 660	WWI 860	WWR 860 WPS	WWV 980 WPS
<b>Price</b>	\$2,999	\$2,799	\$2,799	\$3,199	\$4,299	\$5,349
<b>Item Number</b>	11902450	11407310	11407330	11407370	11420470	11006000
<b>Load Capacity</b>	8 kg	9 kg	9 kg	9 kg	9 kg	9 kg
<b>Door Design</b>	Chrome / Black	Chrome / Black	Chrome / Black	Chrome / Black	Chrome / White	Chrome / Alu Silver
<b>Display</b>	ComfortSensor / 1-line, White	1 line DirectSensor White	1 line DirectSensor White	1 line DirectSensor White	M Touch	M Touch
<b>Fascia</b>	5° angle	5° angle	5° angle	5° angle	5° angle	5° angle
<b>Installation: Built-under</b>	-	-	-	-	-	-
<b>Built-under Kit</b>	-	-	-	-	-	-
<b>Miele Washer DNA</b>	YES	YES	YES	YES	YES	YES
<b>Water Connection</b>	Hot and Cold Connect	Cold Connection	Cold Connection	Hot and Cold Connection	Hot and Cold Connection	Hot and Cold Connection
<b>Water Protection System</b>	WCS <sup>4</sup>	WCS <sup>4</sup>	WCS <sup>4</sup>	WCS <sup>4</sup>	WPS <sup>5</sup>	WPS <sup>5</sup>
<b>Wash Programmes</b>	12	17	16	22	26	28
<b>Spin Speed</b>	1400rpm	1400rpm	1400rpm	1600rpm	1600rpm	1600rpm
<b>Cap Dosing</b>	YES	YES	YES	YES	YES	YES
<b>TwinDos Automatic Detergent Dispensing</b>	YES	-	YES	YES	YES	YES
<b>QuickPowerWash Programme (4 kg)</b>	YES	YES	-	YES	YES	YES
<b>SingleWash</b>	YES	YES	-	YES	YES	YES
<b>Stains</b>	YES	-	-	YES	YES	YES
<b>Soak Option</b>	YES	YES	YES	YES	YES	YES
<b>Extra Quiet Option</b>	YES	YES	YES	YES	YES	YES
<b>Honeycomb Drum</b>	YES	YES	YES	YES	YES	YES
<b>SteamCare</b>	-	-	-	-	-	YES
<b>AddLoad</b>	YES	YES	YES	YES	YES	YES
<b>Pre-ironing</b>	YES	YES	YES	YES	YES	YES
<b>24 h Delay Start</b>	YES	YES	YES	YES	YES	YES
<b>LED Drum Lighting</b>	-	-	-	-	YES	YES
<b>Choice of Language (MultiLingua)</b>	YES	YES	YES	YES	YES	YES
<b>Energy / WELS Star Rating Test Programme</b>	4.5 / 4.5 ECO 40-60	4.5 / 4.5 Cottons <math>\leq 40^{\circ}\text{C}</math>	4.5 / 4.5 Cottons <math>\leq 40^{\circ}\text{C}</math>	4.5 / 4.5 Cottons <math>\leq 40^{\circ}\text{C}</math>	5.0 / 5.0 Cottons <math>\leq 40^{\circ}\text{C}</math>	5.0 / 5.0 Cottons <math>\leq 40^{\circ}\text{C}</math>
<b>WELS Registration Number</b>	C02037	C01825	C01820	C01821	C01765	C01667
<b>Water l / Wash</b>	67	76	76	76	64	64
<b>ECOFeedback</b>	-	-	-	YES	YES	YES
<b>Miele@home</b>	YES	YES	YES	YES	YES	YES
<b>Complimentary UltraPhase 1 and 2</b>	YES	-	YES	YES	YES	YES
<b>Voucher for 6 Month Supply of UltraPhase</b>	YES	-	YES	YES	YES	YES
<b>CapDos Sample</b>	YES	YES	YES	YES	YES	YES

## Matching Tumble Dryers

TWF 720 WP / TWH 780 WP



TWH 780 WPS



TWL 780 WP



TWR 780 WP



TWV 780 WP



## Tumble Dryer Specifications



	<b>TCA 220 WP</b>	<b>TWC 220 WP</b>	<b>TWD 660 WP</b>	<b>TWD 364 WP</b>
<b>Price</b>	<b>\$1,799</b> ■	<b>\$2,299</b>	<b>\$2,399</b>	<b>\$2,499</b>
<b>Item Number</b>	12388960	11905880	11621390	12210550
<b>Load Capacity</b>	7 kg	8 kg	8 kg	9 kg
<b>Door Design</b>	White solid door, straight front	White solid door, curved front	Black / White	White / Black
<b>Display</b>	EasyControl yellow / 7-segment	7 segment DirectSensor Yellow	7 segment DirectSensor Yellow	7 segment DirectSensor Yellow
<b>Fascia</b>	Straight	5° angle	5° angle	5° angle
<b>Fascia Graphic</b>	T1 Active	T1 8 kg	T1 EcoSpeed & 8 kg ModernLife	T1 9 kg XL Performance
<b>SilenceDrum</b>	-	-	-	-
<b>Installation: Built-under</b>	-	-	-	-
<b>Reversible Door Hinge</b>	-	YES	YES	YES
<b>Stacking Kit for Matching Machine</b>	WTV 502	WTV 502	WTV 502	WTV 502
<b>Stacking Kit for Matching Machine with Pull Out Storage Drawer</b>	WTV 511	WTV 511	WTV 512	WTV 512
<b>Miele Dryer DNA</b>	YES	YES	YES	YES
<b>ProfiEco Motor</b>	-	YES	YES	YES
<b>Drying Programmes</b>	12	12	12	12
<b>Wash2Dry</b>	-	-	YES	YES
<b>DryCare 40</b>	-	-	-	-
<b>HygieneDry</b>	-	-	-	-
<b>SteamFinish / PowerFresh</b>	- / -	- / -	- / -	- / -
<b>DryFresh</b>	-	-	-	-
<b>AddLoad</b>	YES	YES	YES	YES
<b>Pre-ironing</b>	YES	YES	YES	YES
<b>Delay Start</b>	YES	YES	YES	YES
<b>Freshen Up Option</b>	-	-	-	-
<b>Bed Linen Programme</b>	YES	-	YES	YES
<b>FragranceDos / FragranceDos<sup>2</sup></b>	YES / -	YES / -	YES / -	YES / -
<b>Energy Star Rating</b>	9	9	9	9
<b>EcoFeedback</b>	-	-	-	-
<b>ECO Option</b>	-	-	-	-
<b>Miele@home</b>	-	-	YES	YES
<b>1x Aqua Fragrance Flacon</b>	YES	YES	YES	YES
<b>Drying Basket (TRK 555)</b>	-	-	-	-

## Matching Washing Machines



## Tumble Dryer Specifications

	TWF 720 WP	TWH 780 WP	TWL 780 WP	TWR 780 WP	TWV 780 WP
<b>Price</b>	<b>\$2,999</b>	<b>\$3,199</b>	<b>\$3,999</b>	<b>\$4,999</b>	<b>\$5,399</b>
<b>Item Number</b>	11493720	11905900	11905910	11905920	11905930
<b>Load Capacity</b>	8 kg	9 kg	9 kg	9 kg	9 kg
<b>Door Design</b>	Chrome / Black	Chrome, inner ring Black	Chrome, inner ring Black	Outer ring high-gloss chrome, inner ring White	Outer ring high-gloss chrome, inner ring Silver
<b>Display</b>	7 segment DirectSensor White	7 segment DirectSensor White	1 line ComfortSensor White	M Touch	M Touch
<b>Fascia</b>	5° angle	5° angle	5° angle	5° angle	5° angle
<b>Fascia Graphic</b>	T1 Eco & 8 kg	T1 EcoSpeed & 9 kg	T1 EcoSpeed & 9 kg	T1 EcoSpeed & Steam & 9 kg	T1 Eco & Steam & 9 kg Passion
<b>SilenceDrum</b>	-	YES	YES	YES	YES
<b>Installation: Built-under</b>	-	-	-	-	-
<b>Reversible Door Hinge</b>	YES	YES	YES	YES	YES
<b>Stacking Kit for Matching Machine</b>	WTV 502	WTV 502	WTV 502	WTV 502	WTV 502
<b>Stacking Kit for Matching Machine with Pull Out Storage Drawer</b>	WTV 512	WTV 512	WTV 512	WTV 512	WTV 512
<b>Miele Dryer DNA</b>	YES	YES	YES	YES	YES
<b>ProfiEco Motor</b>	YES	YES	YES	YES	YES
<b>Drying Programmes</b>	12	12	22	22	23
<b>Wash2Dry</b>	-	YES	YES	YES	YES
<b>DryCare 40</b>	-	YES	YES	YES	YES
<b>HygieneDry</b>	-	YES	YES	YES	YES
<b>SteamFinish / PowerFresh</b>	- / -	- / -	YES / YES	YES / YES	YES / YES
<b>DryFresh</b>	-	YES	YES	YES	YES
<b>AddLoad</b>	YES	YES	YES	YES	YES
<b>Pre-ironing</b>	YES	YES	YES	YES	YES
<b>Delay Start</b>	YES	YES	YES	YES	YES
<b>Freshen Up Option</b>	-	-	-	YES	YES
<b>Bed Linen Programme</b>	YES	YES	YES	YES	YES
<b>FragranceDos / FragranceDos<sup>2</sup></b>	- / YES	- / YES	- / YES	- / YES	- / YES
<b>Energy Star Rating</b>	10	10	10	10	10
<b>EcoFeedback</b>	-	YES	YES	YES	YES
<b>ECO Option</b>	-	-	-	-	YES
<b>Miele@home</b>	-	YES	YES	YES	YES
<b>1x Aqua Fragrance Flacon</b>	YES	YES	YES	YES	YES
<b>Drying Basket (TRK 555)</b>	-	-	-	-	YES

## Matching Washing Machines



Package Prices - **Save \$200** when any Miele washing machine and dryer are bought as a package.\*\*

## Package 1



WCA 020 + TCA 220 WP  
Save \$200  
Now \$3,148

## Package 2



WWD 120 + TWC 220 WP  
Save \$200  
Now \$4,148

## Package 3



WWD 660 + TWD 660 WP  
Save \$200  
Now \$4,498

## Package 4



WWD 320 + TWD 660 WP  
Save \$200  
Now \$4,498

## Package 5



WWD 164 + TWD 364 WP  
Save \$200  
Now \$4,598

## Package 6



WWG 360 + TWF 720 WP  
Save \$200  
Now \$5,598

## Package 7



WWG 660 + TWF 720 WP  
Save \$200  
Now \$5,598

## Package 8



WWG 360 + TWH 780  
Save \$200  
Now \$5,798

## Package 9



WWG 660 + TWH 780  
Save \$200  
Now \$5,798

## Package 10



WWH 860 + TWF 720 WP  
Save \$200  
Now \$5,798

## Package 11



WWH 860 + TWH 780 WP  
Save \$200  
Now \$5,998

## Package 12



WWI 860 + TWL 780 WP  
Save \$200  
Now \$6,998

## Package 13



WWR 860 + TWR 780 WP  
Save \$200  
Now \$9,098

## Package 14



WWV 980 + TWV 780 WP  
Save \$200  
Now \$10,548

\*\*Effective from 1 August 2024. Customers have up to 90 days from date of purchase of their washing machine to purchase the matching tumble dryer at the package price saving. Saving applies to tumble dryer model purchased. Non-matching Miele washing machine and tumble dryer packages can be purchased.

## Experience The Best of Both Worlds with Miele Washer Dryers

Miele washer dryers can be positioned in almost any space and with features such as TwinDos – the most efficient liquid detergent dispensing system on the market - you'll experience worry-free washing for many years to come and perfect drying results with the greatest of care while making life at home a great deal easier.

### Washer Dryers - Standard DNA



#### Miele Quality

Miele carries out intensive endurance tests to meet the highest quality standards.<sup>1</sup>



Exclusive to Miele

#### Honeycomb Drum

Gentle laundry care - Never hand wash again.



#### Miele Made Electronics

Quality, serviceability and peace of mind.



#### 4 Suspension Springs & 3 Shock Absorbers

For balance and minimised operational noise.



#### ProfiEco Motor

Long-lasting, powerful, efficient, maintenance-free and quiet for your convenience.



#### Stainless Steel Drum Flange

For ultimate durability and hygiene.

### Washer Dryer Highlights\*



Exclusive to Miele

#### TwinDos

Independently tested as the best liquid detergent on the market<sup>2</sup>.



Exclusive to Miele

#### QuickPower Wash & Dry Programmes

Choose to wash, dry or combine the two to achieve perfect results in the shortest time for up to 4 kg.



Exclusive to Miele

#### SingleWash & Dry

Wash and dry single garments and loads up to 1 kg quickly and efficiently.



#### CapDosing

Use Miele's portioned capsules for more delicate items, such as down and silk.



#### Dedicated Delicate Programmes

Even the most delicate items are treated with care, eliminating the need for hand washing.



#### SteamCare

50% less ironing required.

<sup>2</sup>Tested by the Hohenstein Institute. Test no. HL 13.2.10991. \*Features may vary between models.

<sup>1</sup>During development phase of the displayed Washer Dryer series WT1, Miele tested the functionality of core components under controlled laboratory settings with 5,000 washing and 4000 drying cycles using varying programs which simulate 20 years' average use within an average household. Individual products are likely to require servicing from time to time and may require replacement of core components to maintain them in a serviceable condition. More: [Miele.com.au/quality](http://Miele.com.au/quality) or scan the QR code.



Scan the QR code for more information

## Washer Dryer Specifications

**WTD 160 WCS**



**WTR 870 WPM**



**WTW 870 WPM**



	<b>\$3,199</b>	<b>\$4,299</b>	<b>\$4,849</b>
<b>Price</b>	<b>\$3,199</b>	<b>\$4,299</b>	<b>\$4,849</b>
<b>Item Number</b>	11679820	11679830	11679840
<b>Load Capacity / Drum Volume</b>	8 kg Washing / 4 kg Drying 59 l	8 kg Washing / 4 kg Drying 59 l	9 kg Washing / 5 kg Drying 64 l
<b>Installation: Built-under (82 cm) / Slot-in / Stackable</b>	YES / YES / YES	- / YES / YES	- / - / -
<b>Appliance / Door Colour</b>	Lotus White / Graphite Grey PearlFinish	Lotus White / Chrome	Lotus White / Chrome
<b>Fascia Incline</b>	Straight	Slanted	Slanted
<b>Display</b>	DirectSensor White	M Touch	M Touch
<b>Stainless Steel Suds Container</b>	YES	YES	YES
<b>ProfiEco Motor</b>	YES	YES	YES
<b>Water Protection System</b>	WCS	WPM	WPM
<b>Wash Programmes</b>	11	29	29
<b>Drying Programmes</b>	8	21	21
<b>Spin Speed</b>	1500rpm	1600rpm	1600rpm
<b>CapDosing</b>	-	YES	YES
<b>Single Wash&amp;Dry</b>	-	YES	YES
<b>QuickPower (4 kg Capacity)</b>	-	Wash (49 min) / Dry <sup>4</sup> / Wash&Dry (2h 59 min)	Wash (49 min) / Dry <sup>4</sup> / Wash&Dry (2h 59 min)
<b>TwinDos Automatic Detergent Dispensing</b>	-	YES	YES
<b>Honeycomb Drum</b>	YES	YES	YES
<b>SteamCare / Anti-crease</b>	- / YES	YES / YES	YES / YES
<b>AddLoad (Washing ONLY)</b>	YES	YES	YES
<b>24 hr Delay Start / Countdown Indicator / Buzzer</b>	YES / YES / -	YES / YES / YES	YES / YES / YES
<b>Time of Day Display / LED Drum Lighting</b>	- / -	YES / YES	YES / YES
<b>Load Indicator (3D Sensor)</b>	-	-	YES
<b>WashDry Assistant</b>	-	YES	YES
<b>PerfectCare Technology</b>	YES	YES	YES
<b>Energy Star Rating - Washing / Energy Star Rating - Drying</b>	4.5 / 4.0	4.5 / 4.5	5.0 / 4.5
<b>WELS Star Rating</b>	4.5	4.5	4.5
<b>WELS Registration Number</b>	C02014	C02013	C02018
<b>Test Programme</b>	Eco 40-60 Programme	Eco 40-60 Programme	Eco 40-60 Programme
<b>Water Consumption in l / Wash Additional Water used for Drying</b>	67 21	67 21	76 25
<b>Dryer Type</b>	Condenser	Condenser	Condenser
<b>Miele@home</b>	YES	YES	YES
<b>CareAssistant App Feature</b>	YES	YES	YES
<b>Complimentary UltraPhase 1 and 2</b>	-	YES	YES
<b>Voucher for 6 Month Supply of UltraPhase</b>	-	YES	YES

Highlight indicates a differentiation from previous model.

<sup>4</sup>QuickPower Dry programme can follow any wash programme, therefore the timing will vary depending on residual moisture content of load.

## Miele FashionMaster: All-In-One Ironing System for all Types of Fabric

### FashionMaster Performance



#### Honeycomb soleplate

Best ironing results combined with perfect fabric care through the uniform distribution of steam.



#### Up to 4 bar Steam Pressure

Guarantees ironing results to professional standards.



#### Non-stick soleplate

Avoids glossy patches on fabrics. Gentle ironing of sequined and sensitive fabrics.

### FashionMaster Convenience



#### 1-2 lift system

Simple: Two steps, zero effort. Ready to use in seconds and pack down is just as effortless. Easy to manoeuvre thanks to the castor wheels.

#### Infinitely variable height adjustment

Ergonomic ironing system, can be perfectly adjusted to the desired working height.



#### Suction function

Garments are automatically secured in place, preventing them from slipping.



#### Automatic rinsing

Mineral residue left behind from the evaporation process is removed easily and conveniently, ensuring consistent performance and longevity.

### FashionMaster Peace of Mind & Safety



#### Steamer

Gentle and effective smoothing of hanging textiles (e.g. dresses, jackets, curtains).



#### Inflation function

The air cushioning effect prevents steam and hem impressions.



#### CoolDown

Iron switches off after 3 minutes when not in use and will switch back on when moved again.



#### AutoOff function

Iron and steamer automatically switch off when the appliances is no longer in use (approx. 25 mins.)



## B 4847<sup>1</sup> FashionMaster Specifications



<b>Price</b>	<b>\$2,949</b>
<b>Item Number</b>	11977970
<b>Dimensions (Folded W x H x D)</b>	970 mm x 470 mm x 1480 mm
<b>Dimensions in Use (W x H x D)</b>	470 mm x 970 mm x 1480 mm
<b>Iron Surface Area</b>	1200 mm x 400 mm
<b>Iron Colour</b>	Anthracite / Lotus White
<b>Ironing Board Cover Colour<sup>2</sup> &amp; Material</b>	Tayberry Red 100% cotton
<b>Iron Rest &amp; Contour Lid Design<sup>2</sup></b>	YES
<b>Frame Colour<sup>2</sup></b>	Painted Aluminium
<b>Display</b>	1-line text display
<b>Honeycomb Soleplate</b>	YES
<b>Steam Pressure</b>	4 bar
<b>Steam Output</b>	100 g / min
<b>Vertical Steam</b>	YES
<b>Burst of Steam</b>	YES
<b>Continuous Steam</b>	YES
<b>Active Ironing Board (Inflation and Suction Functions)</b>	YES
<b>2-stage Fan</b>	YES
<b>Water Container Volume</b>	1.25 l
<b>Removable Water Container</b>	YES
<b>Refillable Water Container</b>	YES
<b>Multi-layer Ironing</b>	YES
<b>1-2 lift System</b>	YES
<b>Infinitely Variable Height Adjustment Range</b>	830 – 1020 mm
<b>Floor-friendly Rollers</b>	YES
<b>Ironing Board with Comfort Zone</b>	YES
<b>Fan Auto Switch On / Auto Switch Off</b>	YES
<b>Automatic Rinsing and Descaling</b>	YES
<b>Storage Compartment for Iron, Connection Cable and Accessories</b>	YES
<b>CoolDown Function</b>	YES
<b>Auto Off Function</b>	YES
<b>Non-stick Soleplate</b>	YES
<b>Steamer</b>	YES
<b>Descaling Tablets</b>	YES

## Washing Machine and Tumble Dryer Accessories

### Accessories



**UBS W1/G** 09709940  
Built-under kit. Suits WCA, WCD and WCG washing machine models.  
**\$105**



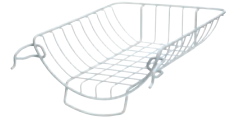
**UBS T1/G** 09710050  
Built-under kit. Suits TCB, TCD tumble dryer models.  
**\$105**



**UP1 cartridge** 10223070  
Empty cartridge for TwinDos washing machines.  
**\$40.40**

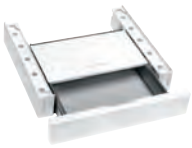


**UP2 cartridge** 10223120  
Empty cartridge for TwinDos washing machines.  
**\$40.40**

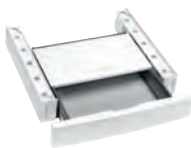


**TRK 555** 09614800  
Dryer basket for T1 series tumble dryers.  
**\$105**

### Stacking Kits and Plinths



**WTV 511** 09351780  
12 cm stacking kit with drawer.  
**\$245**



**WTV 512** 09351790  
12 cm stacking kit with drawer.  
**\$245**



**WTV 501** 009256130  
Slim kit (2.5 cm). Suits models as per table below.  
**\$105**



**WTV 502** 09256140  
Slim kit (2.5 cm). Suits models as per table below.  
**\$105**



**WTV 412** 06667550  
Without drawer. Suits models as per table below.  
**\$105**

### Stacking Kit Compatibility Chart

Washing Machines	Tumble Dryers		
	T1 Series TWB 140 / TWD 440 / TWF 720 TWJ 660 / TWR 860 / TMV 840 TMR 840 / TWV 680 / TWD 660 TWC 220 / TWH 780 / TWL 780 TWR 780 / TWV 780 / TWD 364	T1 and T1 Classic TDB 130 / TDD 130 TCE 630 / TCJ 690 TCR 870 / TCB 140 TCD 660 / TEA 235 TCA 220	T Classic TDA 150 C
<b>W1 Series</b> WMV 960 / WMR 861 WWV 980	WTV 502 WTV 512	WTV 501 WTV 511	WTV 412
<b>W1 and W1 Classic</b> WWD 120 / WWD 320 WWG 360 / WWG 660 WWI 860 / WWR 860 WCE 330 / WCE 670 WCI 670 / WDB 030 WDD 030 / WCR 870 WCR 890 / WCA 020 WWD 660 / WCD 660 WWH 860 / WWD 164	WTV 502 WTV 512	WTV 501 WTV 511	WTV 412

### Plinth Set for Washing Machines and Tumble Dryers



**WTS 510** 99500681  
Laundry plinth with integrated drawer, twin set. Suits all Miele washing machines and tumble dryers. The plinths can only be installed as a side-by-side configuration, with laundry models secured directly to the plinths. This model is not suitable for singular installation, stacked appliances, or single washer-dryer models. Miele plinths are suitable for Miele appliances only, due to safety regulations. Price includes installation for Metro only.  
**\$1,699**

#### Reasons to choose a Plinth Set

- Ideal for people who require:
  - Easier access to their laundry appliances
  - Additional storage space for laundry items
- The plinth height allows you to load and unload your laundry without having to bend over.
- For secure installation the appliances are fixed onto the plinths.
- Plinths are safely secured to each other for added stability and not drilled into the floor.

# Miele

## Riedel Exclusively Recommend Miele as their Dishwasher of Choice for Washing Delicate Stemware



Even high-quality delicate stemware can be washed in a Miele dishwasher without any risk. This is confirmed by Riedel – a manufacturer of wine glasses. Maximilian Riedel recommends Miele dishwashers for washing his glasses (hand-blown and machine-blown)...

*“That our high-end glassware can be perfectly and gently washed in a Miele machine is nothing new to us. A Miele dishwasher makes it easy to care for your glasses perfectly. To ensure that our glasses are cleaned gently, we specifically recommend that they are washed in a Miele dishwasher. This produces better results than washing them by hand.”*

– Maximilian Riedel

\*\*During development phase of the displayed product series dishwasher G 5000 and G 7000, Miele has tested the functionality of core components in durability tests to simulate 20 years' average use within an average household. Individual products are likely to require servicing from time to time and may require replacement of core components to maintain them in a serviceable condition. For more information visit: [Miele.com.au/quality](https://www.miele.com.au/quality) or scan the QR code.

**20  
YEARS**

German engineered and tested to the equivalent of 20 years' average usage.

Terms and Conditions apply. Visit [miele.com.au/quality](https://www.miele.com.au/quality)



Scan the QR code for more information

## A World of Difference with Miele Dishwashers

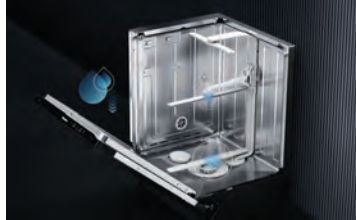
Available in a variety of configurations and load capacities, Miele dishwashers are made for total flexibility. Discover design and craftsmanship that makes caring for your dishes feel ever so indulgent.

### Dishwasher DNA



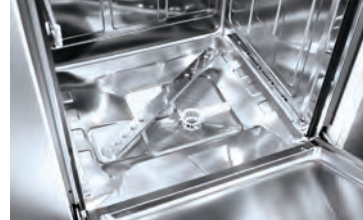
#### Stainless Steel Inner Cavity

Hygienic, durable and simple to clean.



#### EcoPower Technology

Economical and efficient for the life of the machine.



#### 3-Stage Filtration

Highly effective filtration of food soiling.



#### Triple Spray Arms

For an efficient and thorough clean on all levels.



#### Miele Made Electronics

Quality, serviceability and peace of mind.



#### Miele Quality

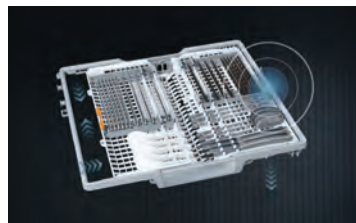
Miele dishwashers are tested to the equivalent of 20 years' average usage.\*\*

### G 5000 Highlights



#### QuickPowerWash

'A' grade wash performance for a full load in under 1 hour.



#### 3D MultiFlex Tray<sup>1</sup>

Safe storage for cutlery, large utensils and even small espresso cups.



#### AutoOpen Dry<sup>1</sup>

Efficient and thorough drying of your crockery and plastic items.



#### Exclusively<sup>1</sup> recommended

by Riedel for washing their high quality stemware.



#### Unbeatable Efficiency

With our re-engineered water distribution system, all Miele G 5000 60 cm dishwashers feature a 6 Star WELS rating and either 4/4.5 Star Energy rating.

This ensures your running costs are kept low for the life of the machine, whilst also caring for the environment.

<sup>1</sup>Available on G 52XX models only.

\*\*During development phase of the displayed product series dishwasher G 5000 and G 7000, Miele has tested the functionality of core components in durability tests to simulate 20 years' average use within an average household. Individual products are likely to require servicing from time to time and may require replacement of core components to maintain them in a serviceable condition. For more information visit: [Miele.com.au/quality](http://Miele.com.au/quality) or scan the QR code.



Scan the QR code for more information

## G 7000 - The Worlds First Autonomous Dishwasher with Integrated PowerDisk

Discover excellent cleaning results with AutoDos: the world's first innovative automatic dispensing system with integrated PowerDisk – developed by Miele.

### G 7000 Highlights



#### QuickPowerWash

Wash a full load of lightly soiled dishes in under an hour with either PowerDisk or UltraTabs.



#### Miele@Home System

Cleverly connected with intelligent operation, consumption insights and important reminders.



#### 3D MultiFlex tray

Maximum flexibility and safe storage for cutlery, large utensils and even small espresso cups.



#### FlexLine Baskets & 3D MultiFlex Tray

FlexLine adjustable baskets design ensures easy stacking for effortless and optimum cleaning results.



#### 6 Star Water Rating<sup>1</sup>

Miele has the largest range of 6 star water rated dishwashers.



#### Certified Hygiene

Miele dishwashers remove more than 99.9% of bacteria.<sup>^</sup>



**Bonus\***  
6 months' supply of Miele PowerDisk valued at **\$110.40** with every Miele AutoDos dishwasher.

#### AutoDos and PowerDisk<sup>1</sup>

Automatic and accurate dispensing for every wash programme providing amazing wash results and savings in detergent costs.

We developed our dishwashers and our exclusive powder granulate as a precisely coordinated system. Depending on the selected programme, the powder granulate is automatically dispensed – exactly the right quantity at exactly the right time. Repeated dispensing within a programme is also possible. A sensor in the Automatic programme measures the degree of soiling and adapts the dosage accordingly.

One PowerDisk cartridge automatically dispenses for approximately 1 month (20 cycles / PowerDisk depending on programmes selected).

<sup>1</sup>www.waterrating.gov.au as at 3 June 2024.

<sup>^</sup>Refers to the Enterococcus faecium or Micrococcus luteus bacteria in the hygiene programme with AutoDos and PowerDisk in the ECO 50°C and QuickPowerWash 65°C programmes. <sup>1</sup>Available from G 711x models. \*6 month supply PowerDisk voucher redeemable at shop.miele.com.au

## Dishwasher Specifications - Freestanding

**G 5000 BK BRWS**



**G 5000 BK CLST**



**G 5000 SC CLST**



	<b>G 5000 BK BRWS</b>	<b>G 5000 BK CLST</b>	<b>G 5000 SC CLST</b>
<b>Price</b>	<b>\$1,449</b>	<b>\$1,549</b>	<b>\$1,649</b>
<b>Item Number</b>	11587480	11587490	11587510
<b>Colour</b>	Brilliant White	CleanSteel	CleanSteel
<b>Place Settings</b>	14	14	14
<b>Basket Design</b>	Comfort Baskets	Comfort Baskets	Comfort Baskets
<b>Cutlery Basket (BK)</b>	YES	YES	-
<b>Cutlery Tray (SC)</b>	-	-	Fixed cutlery tray
<b>Wash Programmes</b>	5	5	5
<b>Display Type</b>	7-segment Yellow display)	7-segment Yellow display	7-segment Yellow display
<b>Automatic Dispensing with Integrated PowerDisk</b>	-	-	-
<b>AutoStart Function</b>	-	-	-
<b>Delay Start</b>	-	-	-
<b>EcoFeedback</b>	-	-	-
<b>AutoOpen Drying</b>	-	-	-
<b>AutoClose</b>	-	-	-
<b>Brilliant LED Light</b>	-	-	-
<b>Knock2Open (K2O)</b>	-	-	-
<b>Operation Noise</b>	46 (db)	46 (db)	46 (db)
<b>Wash Extras / Options: Express / ExtraClean / ExtraDry / IntenseZone / Bottle Wash</b>	YES / YES / YES / - / -	YES / YES / YES / - / -	YES / YES / YES / - / -
<b>MultiLingua</b>	-	-	-
<b>Triple Spray Arms / Alternating Action</b>	YES	YES	YES
<b>QuickPowerWash</b>	YES	YES	YES
<b>Brilliant GlassCare</b>	-	-	-
<b>EcoPower Technology</b>	YES	YES	YES
<b>Energy Star Rating</b>	4	4	4
<b>WELS Star Rating</b>	6	6	6
<b>WELS Registration Number</b>	D02483	D02483	D02487
<b>Water Consumption in l / Wash</b>	9.2	9.2	9.2
<b>Test Programme Used</b>	ECO	ECO	ECO
<b>Miele@home</b>	-	-	-
<b>1 Month Supply of UltraTabs All in 1<sup>3</sup></b>	YES	YES	YES
<b>1 Month Supply of PowerDisk<sup>4</sup></b>	-	-	-
<b>6 Months Supply of PowerDisk<sup>5</sup></b>	-	-	-

Highlight indicates a differentiation from previous model.

<sup>3</sup>1 month supply equals 20 UltraTab All in 1 tablets. <sup>4</sup>1 month supply equals 1 PowerDisk cartridge. <sup>5</sup>6 months' supply PowerDisk voucher redeemable at shop.miele.com.au

## Dishwasher Specifications - Freestanding

**G 5210 SC CLST**



**G 7130 SC CLST**



Price	\$1,999	\$2,599
Item Number	11587590	12531610
Colour	CleanSteel	CleanSteel
Place Settings	14	14
Basket Design	Comfort Baskets	ExtraComfort
Cutlery Basket (BK)	-	-
Cutlery Tray (SC)	3D MultiFlex Tray	3D MultiFlex Tray
Wash Programmes	5	8
Display Type	7-segment Yellow display	1-line text display
Automatic Dispensing with Integrated PowerDisk	-	YES
AutoStart Function	-	YES
Delay Start	-	YES
EcoFeedback	-	YES
AutoOpen Drying	YES	YES
AutoClose	-	-
Brilliant LED Light	-	-
Knock2Open (K2O)	-	-
Operation Noise	46 (db)	43 (dB)
Wash Extras / Options: Express / ExtraClean / ExtraDry / IntenseZone / Bottle Wash	YES / YES / YES / - / -	YES / YES / YES / YES / YES
MultiLingua	-	YES
Triple Spray Arms / Alternating Action	YES	YES
QuickPowerWash	YES	YES
Brilliant GlassCare	YES	YES
EcoPower Technology	YES	YES
Energy Star Rating	4.5	4.5
WELS Star Rating	6	6
WELS Registration Number	D02491	D02879
Water Consumption in l / Wash	9.2	9.3
Test Programme Used	ECO	ECO
Miele@home	-	YES
1 Month Supply of UltraTabs All in 1 <sup>3</sup>	YES	-
1 Month Supply of PowerDisk <sup>4</sup>	-	YES
6 Months Supply of PowerDisk <sup>5</sup>	-	YES

Highlight indicates a differentiation from previous model.

<sup>3</sup>1 month supply equals 20 UltraTab All in 1 tablets. <sup>4</sup>1 month supply equals 1 PowerDisk cartridge. <sup>5</sup>6 months' supply PowerDisk voucher redeemable at shop.miele.com.au

## Dishwasher Specifications - Built-Under

G 5000 SCU BRWS



G 5000 SCU CLST



G 5210 SCU CLST



	G 5000 SCU BRWS	G 5000 SCU CLST	G 5210 SCU CLST
<b>Price</b>	<b>\$1,649</b>	<b>\$1,749</b>	<b>\$2,149</b>
<b>Item Number</b>	11587520	11587530	11587610
<b>Colour</b>	Brilliant White	CleanSteel	CleanSteel
<b>Place Settings</b>	14	14	14
<b>Basket Design</b>	Comfort Baskets	Comfort Baskets	Comfort Baskets
<b>Cutlery Basket (BK)</b>	YES	YES	-
<b>Cutlery Tray (SC)</b>	-	-	3D MultiFlex Tray
<b>Wash Programmes</b>	5	5	5
<b>Display Type</b>	7-segment Yellow display	7-segment Yellow display	7-segment Yellow display
<b>Automatic Dispensing with Integrated PowerDisk</b>	-	-	-
<b>AutoStart Function</b>	-	-	-
<b>Delay Start</b>	-	-	-
<b>EcoFeedback</b>	-	-	-
<b>AutoOpen Drying</b>	-	-	YES
<b>AutoClose</b>	-	-	-
<b>Brilliant LED Light</b>	-	-	-
<b>Knock2Open (K2O)</b>	-	-	-
<b>Operation Noise</b>	46 (db)	46 (db)	46 (db)
<b>Wash Extras / Options: Express / ExtraClean / ExtraDry / IntenseZone / Bottle Wash</b>	YES / YES / YES / - / -	YES / YES / YES / - / -	YES / YES / YES / - / -
<b>MultiLingua</b>	-	-	-
<b>Triple Spray Arms / Alternating Action</b>	YES	YES	YES
<b>QuickPowerWash</b>	YES	YES	YES
<b>Brilliant GlassCare</b>	-	-	YES
<b>EcoPower Technology</b>	YES	YES	YES
<b>Energy Star Rating</b>	4	4	4.5
<b>WELS Star Rating</b>	6	6	6
<b>WELS Registration Number</b>	D02488	D02488	D02492
<b>Water Consumption in l / Wash</b>	9.2	9.2	9.2
<b>Test Programme Used</b>	ECO	ECO	ECO
<b>Miele@home</b>	-	-	-
<b>1 Month Supply of UltraTabs All in 1<sup>3</sup></b>	YES	YES	YES
<b>1 Month Supply of PowerDisk<sup>4</sup></b>	-	-	-
<b>6 Months Supply of PowerDisk<sup>5</sup></b>	-	-	-

Highlight indicates a differentiation from previous model.

<sup>3</sup>1 month supply equals 20 UltraTab All in 1 tablets. <sup>4</sup>1 month supply equals 1 PowerDisk cartridge. <sup>5</sup>6 months' supply PowerDisk voucher redeemable at shop.miele.com.au



## Dishwasher Specifications - Built-Under

G 7130 SCU CLST



G 7604 SCU CLST



G 7609 SCU XXL CLST



	G 7130 SCU CLST	G 7604 SCU CLST	G 7609 SCU XXL CLST
<b>Price</b>	<b>\$2,799</b>	<b>\$2,999</b>	<b>\$3,249</b>
<b>Item Number</b>	12531620	12531670	12531680
<b>Colour</b>	CleanSteel	CleanSteel with Obsidian Black Fascia	CleanSteel with Obsidian Black Fascia
<b>Place Settings</b>	14	14	15
<b>Basket Design</b>	ExtraComfort	ExtraComfort	ExtraComfort
<b>Cutlery Basket (BK)</b>	-	-	-
<b>Cutlery Tray (SC)</b>	3D MultiFlex Tray	3D MultiFlex Tray	3D MultiFlex Tray
<b>Wash Programmes</b>	8	10	10
<b>Display Type</b>	1-line text display	1-line text display	1-line text display
<b>Automatic Dispensing with Integrated PowerDisk</b>	YES	YES	YES
<b>AutoStart Function</b>	YES	YES	YES
<b>Delay Start</b>	YES	YES	YES
<b>EcoFeedback</b>	YES	YES	YES
<b>AutoOpen Drying</b>	YES	YES	YES
<b>AutoClose</b>	-	-	-
<b>Brilliant LED Light</b>	-	-	-
<b>Knock2Open (K2O)</b>	-	-	-
<b>Operation Noise</b>	43 (db)	42 (db)	42 (db)
<b>Wash Extras / Options: Express / ExtraClean / ExtraDry / IntenseZone / Bottle Wash</b>	YES / YES / YES / YES / YES	YES / YES / YES / YES / YES	YES / YES / YES / YES / YES
<b>MultiLingua</b>	YES	YES	YES
<b>Triple Spray Arms / Alternating Action</b>	YES	YES	YES
<b>QuickPowerWash</b>	YES	YES	YES
<b>Brilliant GlassCare</b>	YES	YES	YES
<b>EcoPower Technology</b>	YES	YES	YES
<b>Energy Star Rating</b>	4.5	4.5	4.5
<b>WELS Star Rating</b>	6	6	6
<b>WELS Registration Number</b>	D02880	D02883	D02885
<b>Water Consumption in l / Wash</b>	9.3	9.3	9.6
<b>Test Programme Used</b>	ECO	ECO	ECO
<b>Miele@home</b>	YES	YES	YES
<b>1 Month Supply of UltraTabs All in 1<sup>3</sup></b>	-	-	-
<b>1 Month Supply of PowerDisk<sup>4</sup></b>	YES	YES	YES
<b>6 Months Supply of PowerDisk<sup>5</sup></b>	YES	YES	YES

Highlight indicates a differentiation from previous model.

<sup>3</sup>1 month supply equals 20 UltraTab All in 1 tablets. <sup>4</sup>1 month supply equals 1 PowerDisk cartridge. <sup>5</sup>6 months' supply PowerDisk voucher redeemable at shop.miele.com.au

## Dishwasher Specifications - Integrated

**G 5000 SCi CLST**



**G 5210 SCi CLST**



**G 7130 SCi CLST**



Price	\$1,749	\$2,149	\$2,799
Item Number	11587550	11587630	12531640
Colour	CleanSteel fascia	CleanSteel fascia	CleanSteel fascia
Place Settings	14	14	14
Basket Design	Comfort Baskets	Comfort Baskets	ExtraComfort
Cutlery Basket (BK)	YES	-	-
Cutlery Tray (SC)	-	3D MultiFlex Tray	3D MultiFlex Tray
Wash Programmes	5	5	8
Display Type	7-segment Yellow display	7-segment Yellow display	1-line text display
Automatic Dispensing with Integrated PowerDisk	-	-	YES
AutoStart Function	-	-	YES
Delay Start	-	-	YES
EcoFeedback	-	-	YES
AutoOpen Drying	-	YES	YES
AutoClose	-	-	-
Brilliant LED Light	-	-	-
Knock2Open (K2O)	-	-	-
Operation Noise	46 (db)	46 (db)	43 (db)
Wash Extras / Options: Express / ExtraClean / ExtraDry / IntenseZone / Bottle Wash	YES / YES / YES / - / -	YES / YES / YES / - / -	YES / YES / YES / YES / YES
MultiLingua	-	-	YES
Triple Spray Arms / Alternating Action	YES	YES	YES
QuickPowerWash	YES	YES	YES
Brilliant GlassCare	-	YES	YES
EcoPower Technology	YES	YES	YES
Energy Star Rating	4	4.5	4.5
WELS Star Rating	6	6	6
WELS Registration Number	D02489	D02493	D02881
Water Consumption in l / Wash	9.2	9.2	9.3
Test Programme Used	ECO	ECO	ECO
Miele@home	-	-	YES
1 Month Supply of UltraTabs All in 1 <sup>3</sup>	YES	YES	-
1 Month Supply of PowerDisk <sup>4</sup>	-	-	YES
6 Months Supply of PowerDisk <sup>5</sup>	-	-	YES

Highlight indicates a differentiation from previous model.

<sup>3</sup>1 month supply equals 20 UltraTab All in 1 tablets. <sup>4</sup>1 month supply equals 1 PowerDisk cartridge. <sup>5</sup>6 months' supply PowerDisk voucher redeemable at shop.miele.com.au

## Dishwasher Specifications - Integrated

**G 7609 SCi XXL**



**G 7719 SCi XXL**



**G 7939 SCi XXL**



Price	<b>\$3,299</b>	<b>\$3,799</b>	<b>\$4,999</b>
Item Number	12531690	12531710	12531730
Colour	CleanSteel with Obsidian Black Fascia	Obsidian Black Fascia	Obsidian Black Fascia
Place Settings	15	15	15
Basket Design	ExtraComfort	MaxiComfort	MaxiComfort
Cutlery Basket (BK)	-	-	-
Cutlery Tray (SC)	3D MultiFlex Tray	3D MultiFlex Tray	3D MultiFlex Tray
Wash Programmes	10	13	13
Display Type	1-line text display	1-line text display	M Touch
Automatic Dispensing with Integrated PowerDisk	YES	YES	YES
AutoStart Function	YES	YES	YES
Delay Start	YES	YES	YES
EcoFeedback	YES	YES	YES
AutoOpen Drying	YES	YES	YES
AutoClose	-	-	-
Brilliant LED Light	-	YES	YES
Knock2Open (K2O)	-	-	-
Operation Noise	42 (db)	42 (db)	42 (db)
Wash Extras / Options: Express / ExtraClean / ExtraDry / IntenseZone / Bottle Wash	YES / YES / YES / YES / YES	YES / YES / YES / YES / YES	YES / YES / YES / YES / YES
MultiLingua	YES	YES	YES
Triple Spray Arms / Alternating Action	YES	YES	YES
QuickPowerWash	YES	YES	YES
Brilliant GlassCare	YES	YES	YES
EcoPower Technology	YES	YES	YES
Energy Star Rating	4.5	4.5	4.5
WELS Star Rating	6	6	6
WELS Registration Number	D02886	D02888	D02890
Water Consumption in l / Wash	9.6	9.6	9.6
Test Programme Used	ECO	ECO	ECO
Miele@home	YES	YES	YES
1 Month Supply of UltraTabs All in 1 <sup>3</sup>	-	-	-
1 Month Supply of PowerDisk <sup>4</sup>	YES	YES	YES
6 Months Supply of PowerDisk <sup>5</sup>	YES	YES	YES

Highlight indicates a differentiation from previous model.

<sup>3</sup>1 month supply equals 20 UltraTab All in 1 tablets. <sup>4</sup>1 month supply equals 1 PowerDisk cartridge. <sup>5</sup>6 months' supply PowerDisk voucher redeemable at shop.miele.com.au

## Dishwasher Specifications - Fully Integrated

**G 5481 SCVi  
(45 cm model)**



**G 5053 SCVi BK**



**G 5263 SCVi BK**



**G 7180 SCVi**



	<b>G 5481 SCVi (45 cm model)</b>	<b>G 5053 SCVi BK</b>	<b>G 5263 SCVi BK</b>	<b>G 7180 SCVi</b>
<b>Price</b>	<b>\$1,999</b>	<b>\$2,149</b>	<b>\$2,499</b>	<b>\$2,999</b>
<b>Item Number</b>	11587660	11587560	11587640	12531650
<b>Colour</b>	CleanSteel	CleanSteel	CleanSteel	CleanSteel
<b>Place Settings</b>	10	14	14	14
<b>Basket Design</b>	Comfort Baskets	Comfort Baskets	Comfort Baskets	ExtraComfort
<b>Cutlery Basket (BK)</b>	-	YES	YES	-
<b>Cutlery Tray (SC)</b>	Fixed Cutlery Tray	Fixed Cutlery Tray	3D MultiFlex Tray	3D MultiFlex Tray
<b>Wash Programmes</b>	5	5	5	8
<b>Display Type</b>	7-segment Yellow display	7-segment Yellow display	7-segment Yellow display	1-line text display
<b>Automatic Dispensing with Integrated PowerDisk</b>	-	-	-	YES
<b>AutoStart Function</b>	-	-	-	YES
<b>Delay Start</b>	-	-	-	YES
<b>EcoFeedback</b>	-	-	-	YES
<b>AutoOpen Drying</b>	-	-	YES	YES
<b>AutoClose</b>	-	-	-	-
<b>Brilliant LED Light</b>	-	-	-	-
<b>Knock2Open (K2O)</b>	-	-	-	-
<b>Operation Noise</b>	46 (db)	46 (db)	46 (db)	43 (db)
<b>Wash Extras / Options: Express / ExtraClean / ExtraDry / IntenseZone / Bottle Wash</b>	YES / YES / YES / - / -	YES / YES / YES / - / -	YES / YES / YES / - / -	YES / YES / YES / YES / YES
<b>MultiLingua</b>	-	-	-	YES
<b>Triple Spray Arms / Alternating Action</b>	YES	YES	YES	YES
<b>QuickPowerWash</b>	YES	YES	YES	YES
<b>Brilliant GlassCare</b>	-	-	YES	YES
<b>EcoPower Technology</b>	YES	YES	YES	YES
<b>Energy Star Rating</b>	3.5	4	4.5	4.5
<b>WELS Star Rating</b>	4.5	6	6	6
<b>WELS Registration Number</b>	D02486	D02490	D02494	D02882
<b>Water Consumption in l / Wash</b>	9.0	9.2	9.2	9.3
<b>Test Programme Used</b>	ECO	ECO	ECO	ECO
<b>Miele@home</b>	-	-	-	YES
<b>1 Month Supply of UltraTabs All in 1<sup>3</sup></b>	YES	YES	YES	-
<b>1 Month Supply of PowerDisk<sup>4</sup></b>	-	-	-	YES
<b>6 Months Supply of PowerDisk<sup>5</sup></b>	-	-	-	YES

Highlight indicates a differentiation from previous model.

<sup>3</sup>1 month supply equals 20 UltraTab All in 1 tablets. <sup>4</sup>1 month supply equals 1 PowerDisk cartridge. <sup>5</sup>6 months' supply PowerDisk voucher redeemable at shop.miele.com.au

## Dishwasher Specifications - Fully Integrated

G 7185 SCVi XXL



G 7659 SCVi XXL



G 7799 SCVi XXL K2O



G 7989 SCVi XXL K2O



	<b>\$3,199</b>	<b>\$3,799</b>	<b>\$4,699</b>	<b>\$5,199</b>
Price	<b>\$3,199</b>	<b>\$3,799</b>	<b>\$4,699</b>	<b>\$5,199</b>
Item Number	12531660	12531700	12531720	12531740
Colour	CleanSteel	Obsidian Black Fascia	Obsidian Black Fascia	Obsidian Black Fascia
Place Settings	15	15	15	15
Basket Design	ExtraComfort	ExtraComfort	<b>MaxiComfort</b>	MaxiComfort
Cutlery Basket (BK)	-	-	-	-
Cutlery Tray (SC)	3D MultiFlex Tray	3D MultiFlex Tray	3D MultiFlex Tray	3D MultiFlex Tray
Wash Programmes	8	<b>10</b>	<b>13</b>	13
Display Type	1-line text display	1-line text display	1-line text display	<b>M Touch Vi</b>
Automatic Dispensing with Integrated PowerDisk	YES	YES	YES	YES
AutoStart Function	YES	YES	YES	YES
Delay Start	YES	YES	YES	YES
EcoFeedback	YES	YES	YES	YES
AutoOpen Drying	YES	YES	YES	YES
AutoClose	-	-	<b>YES</b>	YES
Brilliant LED Light	-	-	<b>YES</b>	YES
Knock2Open (K2O)	-	-	<b>YES</b>	YES
Operation Noise	43 (db)	<b>42 (db)</b>	42 (db)	42 (db)
Wash Extras / Options: Express / ExtraClean / ExtraDry / IntenseZone / Bottle Wash	YES / YES / YES / YES / YES	YES / YES / YES / YES / YES	YES / YES / YES / YES / YES	YES / YES / YES / YES / YES
MultiLingua	YES	YES	YES	YES
Triple Spray Arms / Alternating Action	YES	YES	YES	YES
QuickPowerWash	YES	YES	YES	YES
Brilliant GlassCare	YES	YES	YES	YES
EcoPower Technology	YES	YES	YES	YES
Energy Star Rating	4.5	4.5	4.5	4.5
WELS Star Rating	6	6	6	6
WELS Registration Number	D02884	D02887	D02889	D02891
Water Consumption in l / Wash	<b>9.6</b>	9.6	9.6	9.6
Test Programme Used	ECO	ECO	ECO	ECO
Miele@home	YES	YES	YES	YES
1 Month Supply of UltraTabs All in 1 <sup>3</sup>	-	-	-	-
1 Month Supply of PowerDisk <sup>4</sup>	YES	YES	YES	YES
6 Months Supply of PowerDisk <sup>5</sup>	YES	YES	YES	YES

Highlight indicates a differentiation from previous model.

<sup>3</sup>1 month supply equals 20 UltraTab All in 1 tablets. <sup>4</sup>1 month supply equals 1 PowerDisk cartridge. <sup>5</sup>6 months' supply PowerDisk voucher redeemable at shop.miele.com.au

## Dishwasher Accessories

Suitable for G 5000 and G 7000 dishwashers



**GFV 60/57-7** ▲ 10986710

60 cm wide CleanSteel door panel, suits all G 5000 + G 7000 60 cm wide semi-integrated models with Obsidian Black and CleanSteel fascia panels. Height 570 mm, suitable if keeping appliance spacer strips.

**\$370**



**GFV 60/60-7** 10986720

60 cm wide CleanSteel door panel, suits all G 5000 + G 7000 60 cm wide semi-integrated models with CleanSteel fascia panels. Height 600 mm, suitable if removing appliance spacer strips.

**\$370**



**GFVi 453/72-7** 11526970

CleanSteel door panel, not pre-drilled, supplied without handle (for use with custom handles), suits all 45 cm wide G 5000, fully integrated models.

**\$455**



**GFVi 701/72** 10986740

60 cm wide CleanSteel door panel, not pre-drilled, supplied without handle (for use with custom handles), suits all G 5000 + G 7000 60 cm wide fully integrated models.

**\$455**



**GFVi 702/72** 10986760

60 cm wide CleanSteel door panel, with H 7000 PureLine oven handle, suits all G 5000 + G 7000 60 cm wide fully integrated models.

**\$455**



**GBU 5000** 9614020

Cutlery basket to fit all G 7000 and G 5000 models.

**\$105**





Miele Australia Pty. Ltd.  
ACN 005 635 398  
ABN 96 005 635 398

**Head Office**

PO Box 4084  
Auburn South VIC 3122  
Telephone:  
1300 4 MIELE (1300 464 353)  
www.miele.com.au

**Miele Experience Centre  
Doncaster**

Shop 1136/7, Westfield  
Doncaster  
619 Doncaster Road  
VIC 3108

**Miele Experience Centre  
South Melbourne**

206-210 Coventry Street  
South Melbourne VIC 3205

**Miele Partner Centre**

509 Nepean Highway  
Brighton VIC 3186

**Miele Experience Centre  
and Office Sydney**

3 Skyline Place  
Frenchs Forest NSW 2086

**Miele Experience Centre  
Sydney**

298 Victoria Avenue  
Chatswood NSW 2067

**Miele Experience Centre  
Bondi**

Shop 5001  
Westfield Bondi Junction  
500 Oxford St  
Bondi Junction NSW 2022

**Miele Experience Centre**

Lower Ground Food Hall  
David Jones Elizabeth St. Store  
86-108 Castlereagh Street  
Sydney NSW 2000

**Miele Partner Centre**

90-98 Victoria Rd  
Drummoyne NSW 2047

**Miele Experience Centre  
Canberra**

Canberra Shopping Centre  
148 Bunda St  
Canberra ACT 2608

**Miele Experience Centre  
Brisbane**

63 Skyring Terrace  
Newstead QLD 4006

**Miele Experience Centre  
Gold Coast**

Brickworks Centre  
131 Ferry Road  
Southport QLD 4215

**Miele Experience Centre  
and Office Perth**

205-207 Stirling Highway  
Claremont WA 6010

**Miele Experience Centre  
Karrinyup**

Shop SP1236, Level One  
Karrinyup Shopping Centre  
200 Karrinyup Rd  
Karrinyup WA 6018

**Miele Experience Centre  
and Office Adelaide**

83-85 Sir Donald Bradman Drive  
Hilton SA 5033

**Miele Partner Centre**

620 Cross Rd  
Plympton Park SA 5038

Trading Conditions: Sales transactions are made between Miele Australia Pty. Ltd. and the end consumer.

Terms and Conditions of sale are outlined on the official GST tax invoice.

The Miele Chartered Agent acts on behalf of Miele Australia Pty. Ltd.

For further information about our products and services please visit our website: [www.miele.com.au](http://www.miele.com.au)

This price list is valid throughout Australia as from 1 August 2024.

All prices quoted are in Australian Dollars, inclusive of GST. Product availability and prices are subject to change without prior notice.